

COVID-19-related Critical Illness Polyneuropathy (CIP) and Myopathy (CIM)

Bogaert L, Bruyninckx F, Peers K, Rummens S, Robben E
Department of Physical Medicine and Rehabilitation
University Hospitals Leuven



PRMBELGIUM 2020

✓ **Summary** Incidence of **CIP** is high in the critically ill COVID-19 population and highlights the probable need for intensive **rehabilitation**

📄 **Study design** Cohort study | Retrospective | University Hospitals Leuven

👥 **Population** **21** patients with **COVID-19** discharged from intensive care unit (ICU) between 30 April - 4 June 2020 | Sex (M/F): **61/29%** | Mean age (SD): **62 years (±11)** | Mean ICU stay (SD): **35 days (±14)**

📊 Incidence of electrodiagnostic findings in critical ill patients with COVID-19

Critical illness polyneuropathy **95%**

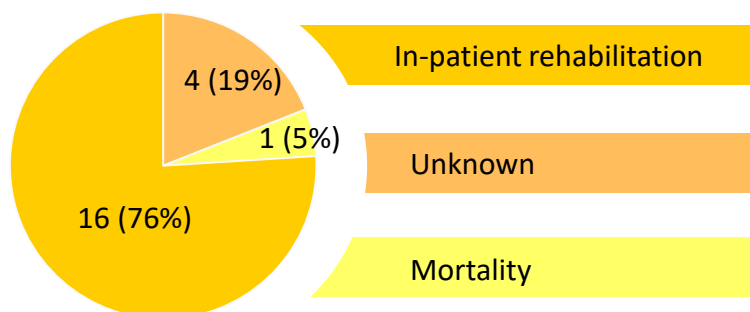
Critical illness myopathy **28%**

Classical sensorimotor polyneuropathy **24%**

Compression neuropathy **38%**

Neuromuscular hyperexcitability **24%**

Implications for rehabilitation



Discharge destination (n=21; %)

What's new?

1. High incidence (38%) of **compression neuropathy** (bilateral fibular nerve ± ulnar nerve)
2. Finding of **neuromuscular hyperexcitability** requires more research

✉ Liedewij.bogaert@uzleuven.be